

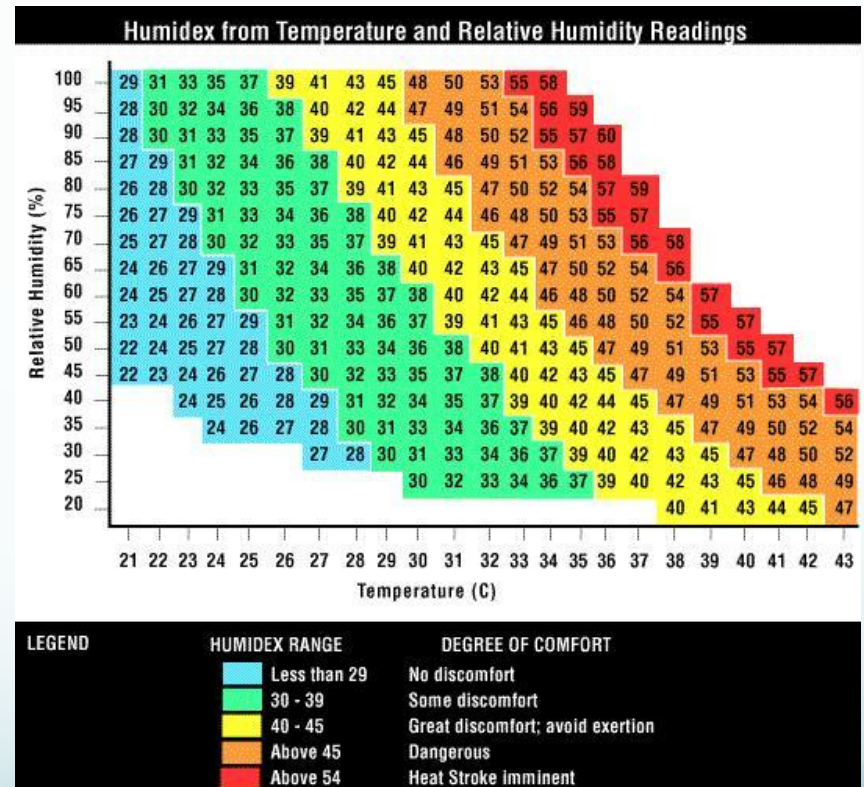
# UDIS PTA Meeting

Welcome!

May 27th 2015

# Outdoor Play, Policy and Procedures

- Heat index
- Policy peer reviewed with Bangkok Patana, they use HI of 50
- Exercise



# Menu and Food

- New Salad Bar
- Healthy Food Month



# Swimming Pool Cover

- New installation



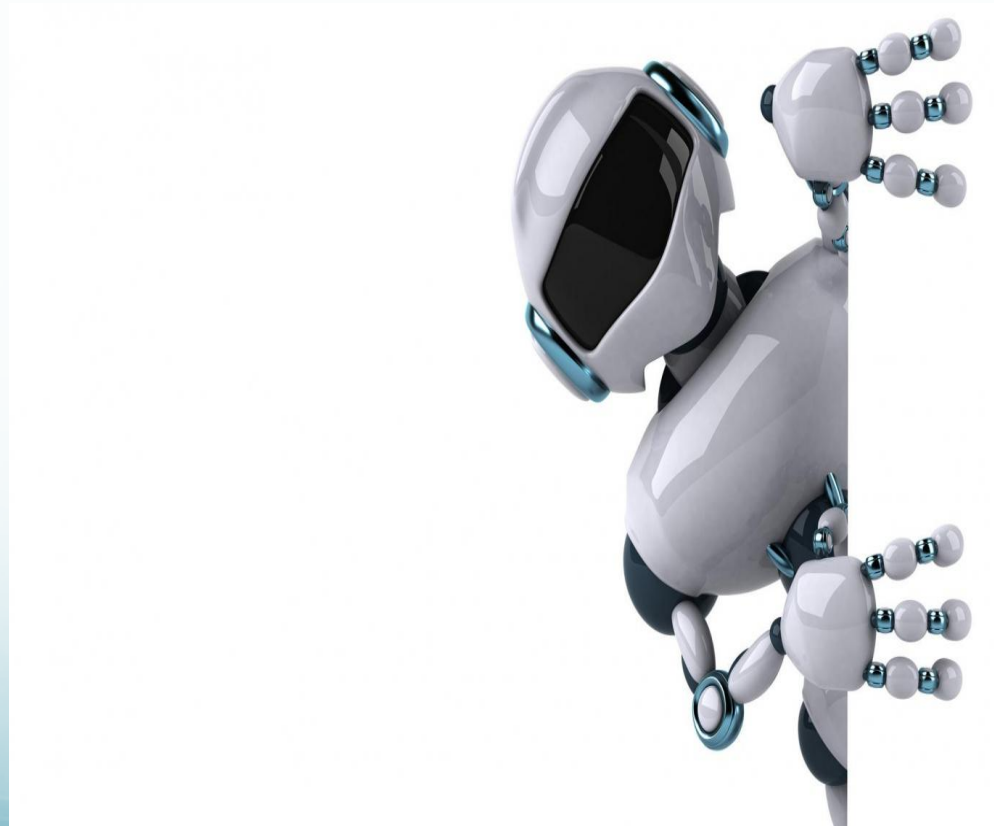
# PTA Outings

- Trip to the Zoo



# Extra-Curricula Activities

- This term and moving forward





# Action Board

- Student-initiated action





# Art Smocks

- Cover for art



# Thai as an Additional Language (TAL)

- Current support
  - Support for student
- Teacher in the new year
  - Extra Thai teacher next year to facilitate TAL programme.
- Facilitate differentiation

# English as an Additional Language (EAL)

- A new programme for 2015/2016
- Development of a department headed by a coordinator.
- Working with students who require English support
  - Students to be assessed at the beginning of the year and will be supported by the EAL dept.

# School Fees

- Fees for 2015/2016 will increase
  - Tuition fees by 6%
  - Catering and transport fees by 3%
  - Textbook and materials
    - Increase by 1,000 baht for EY
    - Increase by 2,000 baht for PY
- Fee increases due to actual costs vs projected costs
- Start of EAL, TAL and learning support programmes
- Annual fee payment is subject to a 5% discount



# When will the school be accredited?

- Accreditation means a school has gone through a vigorous programme of peer review
  - It is a measure of a school's quality
  - Can take 2-3 years (or more) for a new school to achieve
- We will accredit with the following organisations:
  - MOE accredited already by ONESQA
  - We launch our IB candidacy application in September
  - CIS application is pending, jointly done with IB
- Memberships
  - International Schools Association of Thailand (ISAT)
    - Visit completed
    - Announcement pending
- Entry to other schools
  - Often exam based
  - Accreditation more important at secondary levels or for university entrance

# Planning for Next Academic Year

- Preschool and Year 5 classes will open
- Student recruitment
  - Rise in students next year
  - Increase in numbers grows the school
  - F2F promotion
- New programmes: EAL, TAL, LS
- Charities we can link to for student action, service to community

# Open Session

- Any questions?